

APPALACHIAN RHODODENDRON
ON THE BLUE RIDGE PARWAY

The beautiful rhododendron blossom may be seen in summertime at almost any turn of the road along the 470 mile scenic parkway that connects Shenandoah National Park in Virginia with Great Smoky Mountains National Park in North Carolina and Tennessee.

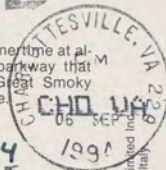
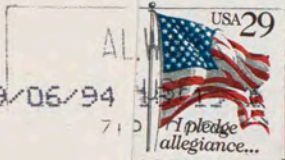


Photo by Ron & Linda Card, Published & Distributed by Cards Unlimited Inc.
P.O. Box 29, Keyesville, VA 23947 Phone 804-736-9786, Printed in Italy



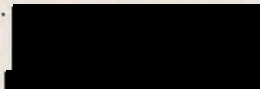
opinion 5 Sep 94

Brian Lamb,

Megadittos!

Gun control is an elitist/populist issue: (A) Retrospectively, in the middle ages a serf who picked up a sword dropped by a noble risked being slain on the spot.

(B) Prospectively, bureaucrats as a class fear being tasked to serve confiscatory warrants on farmers armed with varmint guns.



(Concerns show last week) Charlottesville
VA 22902

VA 060

BRIAN LAMB

C-SPAN

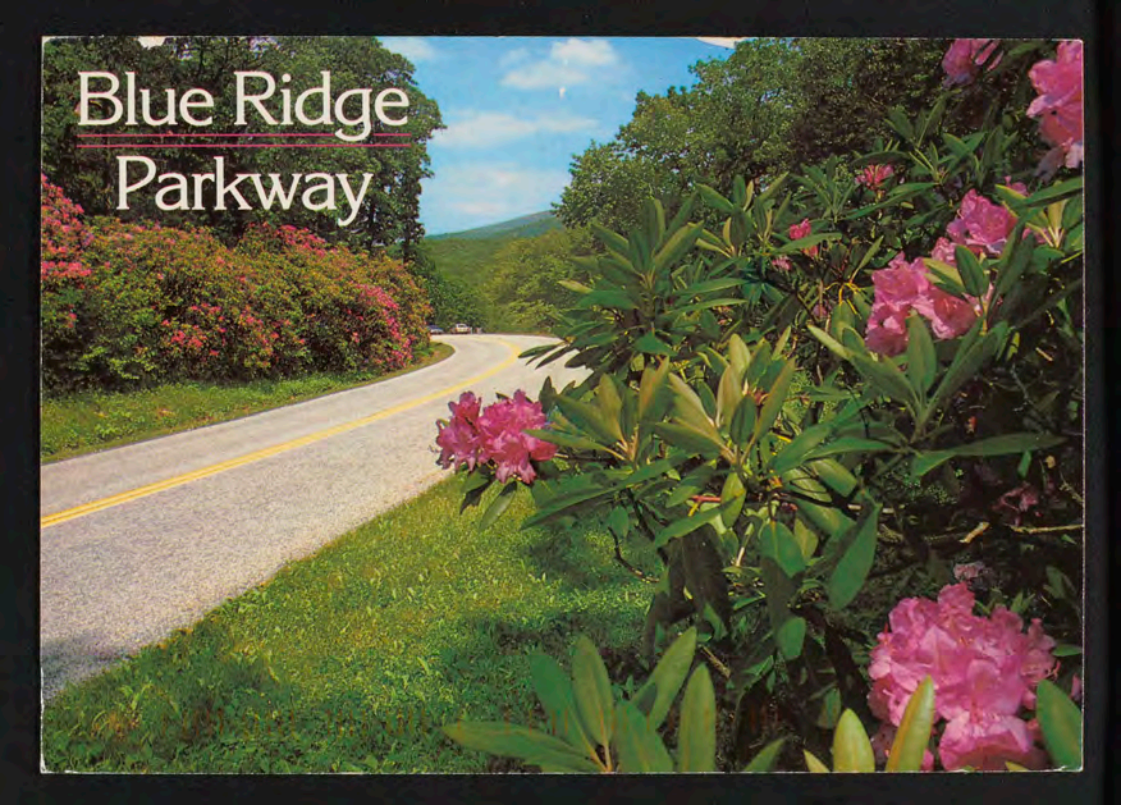
400 CAPITOL NW

650

WASHINGTON

DC 20001

Blue Ridge Parkway

A scenic photograph of a winding asphalt road with double yellow lines, curving through a lush green landscape. In the foreground on the right, there are large, vibrant pink rhododendron flowers with green leaves. On the left side of the road, there is a dense, low-lying bush of pink and red flowers. The road leads towards a distant, hazy mountain peak under a blue sky with scattered white clouds. The overall scene is bright and colorful, capturing the beauty of a spring day in a park.