

C*SPAN

Aug 20/93

Sirs; Just a few comments I want to say responding to your program on Welfare Reform aired Aug. 9th/93.

1) The perception held by most white Americans about welfare recipients is that the prototype of a welfare recipient is black; causing the country to view welfare as a black problem instead of an American problem.

2) In absolute numbers most welfare recipients are white.

3) The medium income of white families is about \$38,000/\$39,000 a year while the medium income of black families is about \$20,000/\$21,000.

(a) This income differential lends itself to a greater propensity for black people to seek welfare assistance;

(b) Also about 33% of black families live below the poverty line; their unemployment rate is double that of whites.

4) After WW II job opportunities exploded for the average American expanding the middle class by leaps and bounds.

(a) The vast majority of black families were left behind.

5) Most of the allocated monies for welfare is mandated to pay the bureaucratic workers whose livelihood depends on the dependency of their welfare clients.

(a) These funds represents less than 2% of the total federal budget of 1 plus trillion dollars.

(b) The number of aid to Dependent Children cases number about 6,000,000 out of a population of approximately 250,000,000 people .

(c) In case people forgot the Food Stamp Program was instituted by the Federal Government to help millions of families in the 60's who were suffering from malnutrition and near starvation.

6) The size of welfare rolls to a great extent is a function of job opportunities; the more decent paying jobs the less persons on welfare; and conversely, the less jobs the more welfare.

(a) Millions of persons work at low paying jobs which dont pay enough to support an average family;

(b) These families carry a good part of the American economy on their backs;

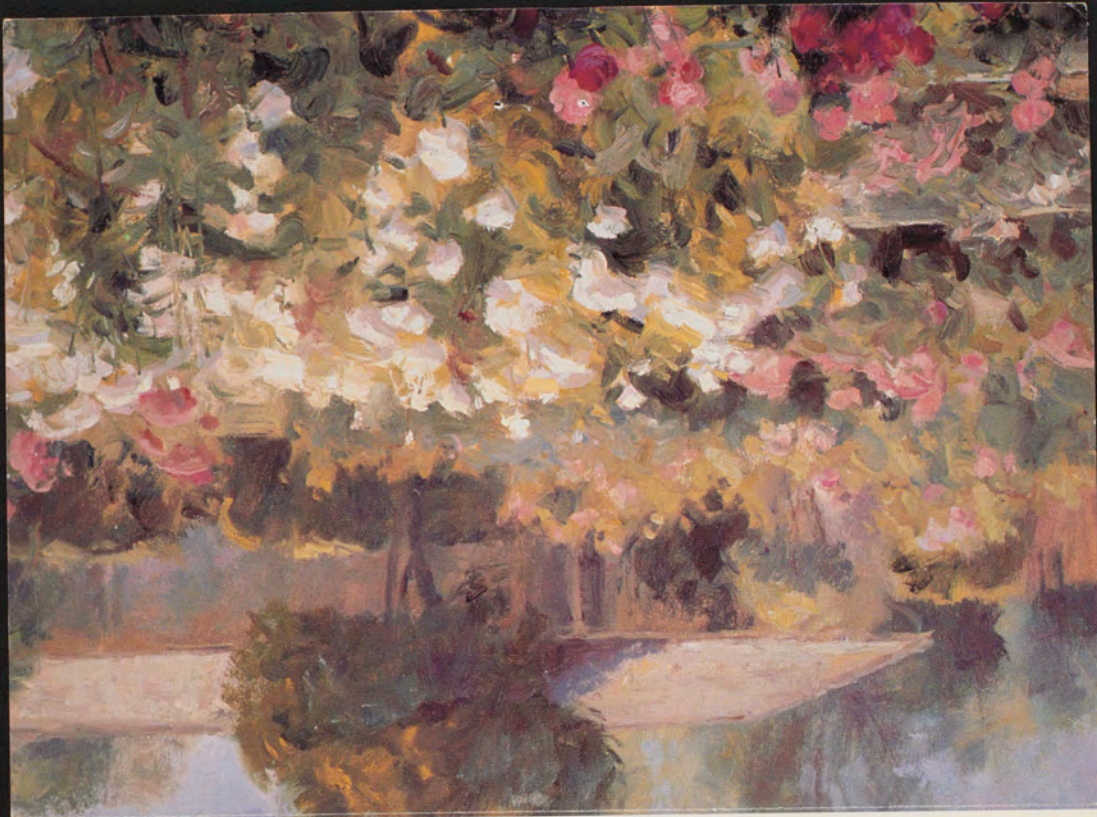
(c) Decent paying jobs are hard to come by, training or not, college degrees not withstanding.

7) The whole issue of welfare REform is laced with racism with its attendant stigma,

(a) In most Americans minds welfare Queens are black,

(b) If Welfare Reform arguments were around the Federal budget alone of under 2% of the total, it would not be a major issue.

The success of welfare Reform will be proportionate to the level of racist attitudes extant in America. Paradoxically, there appears to be a shift from blaming the victims to blaming the system a necessary first step to instill objectivity in the reform process.



Veterans of Foreign Wars



██████████
Bronx, NY
10473-0961



29
USA

Wood Duck



C-SPAN
400 N Capital Street N W Suite 650
Washington, D.C. 20001

00 594 AUG 27 93

