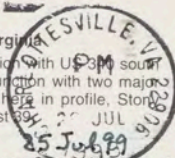


Skyline Drive
Shenandoah National Park, Virginia

The Skyline Drive begins in the north at its junction with US 30 south of Front Royal. It ends 105 miles south at its junction with two major highways, US 250 and Interstate 64. Pictured here in profile, Stoneman Mountain rises above the drive near Milepost 39.



JM,

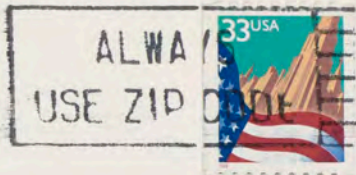
I just had an idea:

Allot half the surplus &
paying off debt, and half to
paying the first x dollars of
FICA (or whatever the acronym).

If the poor saw that tax
cut, they'd be for LESS GOV'T
SPENDING.

As I wrote, someone
said no 28% till FICA
limit (good idea).

CHARLOTTE, N.C.
VA 22902-5147



James Miller
c/o Washington Journal
400 North Capitol St, NW
Suite 650
Washington D C
20001

© Ron & Linda Card. Published & Distributed by Cards Unlimited, Inc.
29, Keyesville, VA 23947-0029. Phone 804-736-9786. Printed in Italy

o.w)

SHENANDOAH NATIONAL PARK

Skyline Drive

